

## Informations for ATEX-Directives

Detail informations for use pneumatic components in Ex-Areas see leaflet A5P060E "EU Directive 94/9/EG (ATEX 95) for Pneumatic Components".

## Technical Data (deviant to the Standard Cylinder )

Pressure quoted as gauge pressure

Characteristics	Symbol	Unit	Description
Ambient temperature range	$\vartheta_{\min}$ $\vartheta_{\max}$	°C °C	-10 +60
Max. switching frequency		Hz	1 (double stroke/s) Basic cylinder 0.5 (1 stroke/s) Cylinder with guide
Operating pressure range	$p_{\max}$	bar	Max. 8
Max. speed	$v_{\max}$	m/s	3 Basic cylinder 2 Cylinder with guide
Medium			Filtered, un lubricated compressed air – free from water and dirt to ISO 8573-1 Solids: Class 7 particle size < 40 µm for Gas Water content: pressure dew point +3 °C, class 4, but at least 5 °C below minimum operating temperature
Noise level		dB (A)	70
Information for materials			Aluminium: see data sheet "Material" Lubrication: see security data sheet "Grease for use in Cylinder with guides" Sealing bands: Corrosion resistant steel

For all other details for dimensions, weights, allowable loads, cushioning diagrams and accessories see data sheets in this catalogue.

## Equipment Group II Categorie 2G

Rodless cylinder:  II 2G c T4 -10°C ≤ Ta ≤ +60°C

Series	Size	Stroke range	Accessories
OSP-P	Ø 10 to 80	1– 6000 mm	Mountings programme
SLIDELINE	Ø 16 to 80	1– 6000 mm	Mountings programme

For **basic cylinder** see 1.10.002E  
For **plain bearing guide SLIDELINE** see 1.40.002E  
For **mountings and accessories** see 1.45.001E to 009E

Data Sheet No. 1.10.020E-1

# OSP

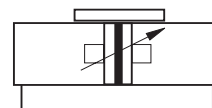
— ORIGA  
— SYSTEM  
— PLUS

## Components for EX-Areas



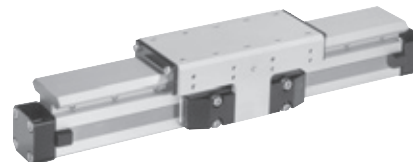
### Rodless Cylinder Ø 10 – 80 mm Basic Cylinder

Series: OSP-P ....ATEX



### Plain Bearing Guide SLIDELINE Ø 16 – 80 mm

Series: SL -...ATEX



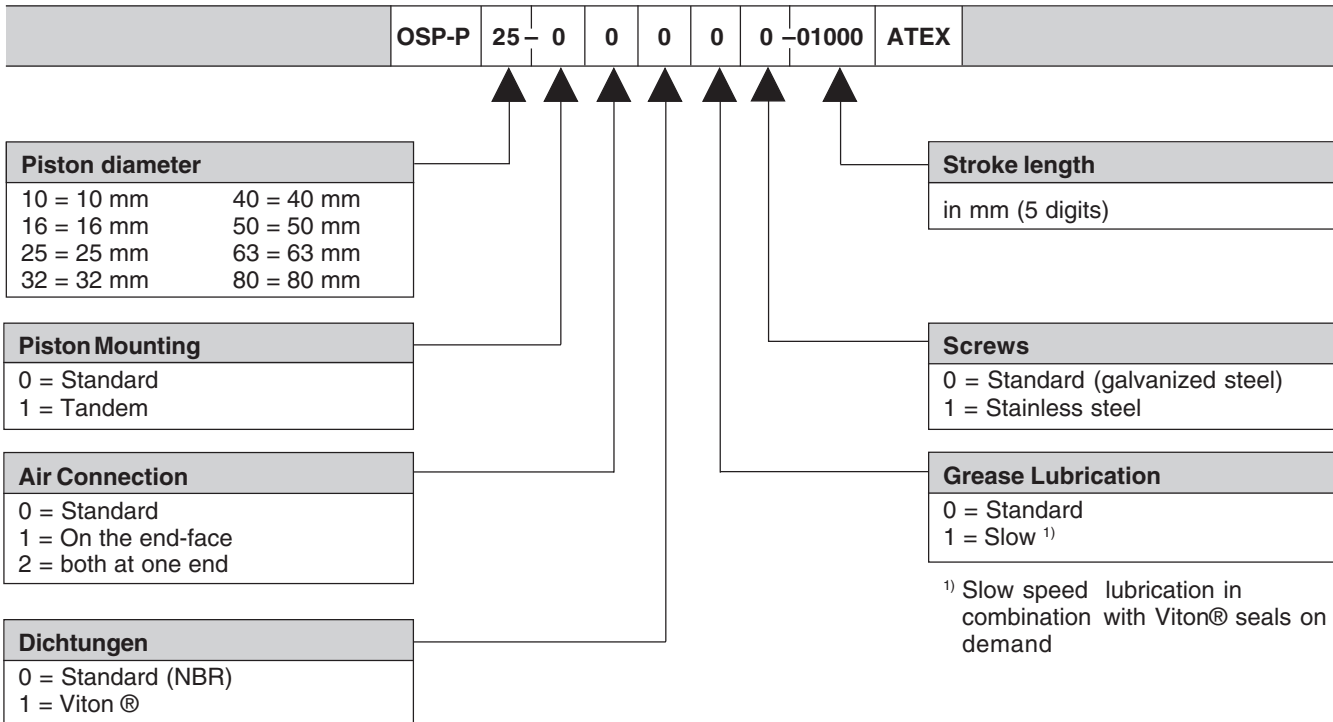
# HOERBIGER



A1P708E00HAD00X

The right to introduce technical modifications is reserved

## Order Instructions – Basic Cylinder – Series OSP-P..... ATEX



### Plain bearing guide SLIDELINE – Series SL...ATEX

– the order its only possible in combination with the basic cylinder OSP-P..ATEX!

for Linear Drive	Order instruction *	Order No.
OSP-P16....ATEX	<b>SL-16ATEX</b>	<b>20341</b>
OSP-P25....ATEX	<b>SL-25ATEX</b>	<b>20342</b>
OSP-P32....ATEX	<b>SL-32ATEX</b>	<b>20196</b>
OSP-P40....ATEX	<b>SL-40ATEX</b>	<b>20343</b>
OSP-P50....ATEX	<b>SL-50ATEX</b>	<b>20195</b>
OSP-P63....ATEX	<b>SL-63ATEX</b>	<b>20853</b>
OSP-P80....ATEX	<b>SL-80ATEX</b>	<b>21000</b>

\* corrosion resistant version on request

### Accessories – please order separately

Description	Further information see Data Sheet No.
Clevis Mounting Ø 16 to Ø 80 mm	<b>1.45.002E-2</b>
End Cap Mounting for OSP-P Basic Cylinder	<b>1.45.003E</b>
End Cap Mounting for OSP-P Basic Cylinder with SLIDELINE	<b>1.45.00E-2</b>
Mid-Section Support for OSP-P Basic Cylinder	<b>1.45.004E</b>
Mid-Section Support for OSP-P Basic Cylinder with SLIDELINE	<b>1.45.005E-3</b>
Inversion Mounting	<b>1.45.006E</b>
Adaptor Profile	<b>1.45.007E</b>
T-Nut Profile	<b>1.45.008E</b>
Adaptor Profile	<b>1.45.009E</b>
Magnetic Switches ATEX-Version	<b>1.45.105E</b>
Cable Cover	<b>1.45.102E</b>