

A1P264E00FX40X

Characteristics to VDI 3290		Pressures quoted as gauge pressure					
Characteristics	Symbol	Unit	Description				
<b>General Features</b>							
Designation			2/2 way valve				
System			Poppet valve normally closed				
Mounting			Directly into tube				
Tube connection			Thread				
Port size			G1/2	G3/4	G1	G1 1/2	G2
Weight (mass)		kg	0.745	1.115	1.365	2.695	4.290
Installation			In any position				
Ambient temperature range	$\vartheta_{\min}$ $\vartheta_{\max}$	°C °C	-20 +80	Note: When using below freezing			
Medium temperature range	$\vartheta_{\min}$ $\vartheta_{\max}$	°C °C	0 +80	point (°C) it is necessary to consult us			
Operating medium			Compressed air, neutral gases, hydraulic fluid (only in cases of low flow rate and slow valve closing speeds)				
Actuating medium			Filtered compressed air				
<b>Pneumatic Characteristics</b>							
Nominal pressure	$p_n$	bar	6.3				
Operating pressure range	$p_{\min}$ $p_{\max}$	bar bar	0 10				
Nominal flow	$Q_N$	l/min	2200	5000	6900	22000	40000
<b>Actuation</b>							
Pneumatic			Direct				

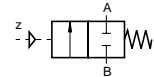
# 2/2 Way Valve

## G1/2-G2

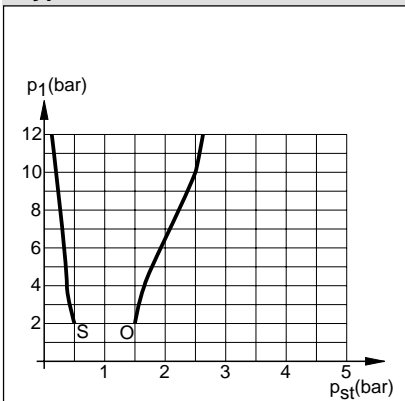
**Actuation:**  
Pneumatic by permanent signal

**Series ARKV**

ARKV-..

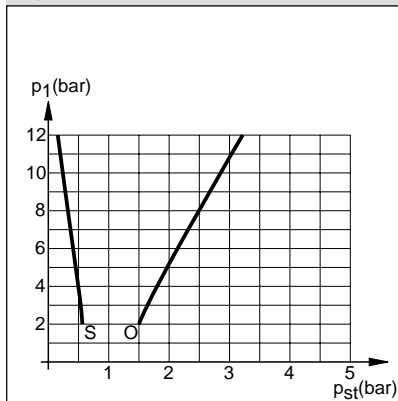


**Actuating Pressure**  
Type: ARKV-15

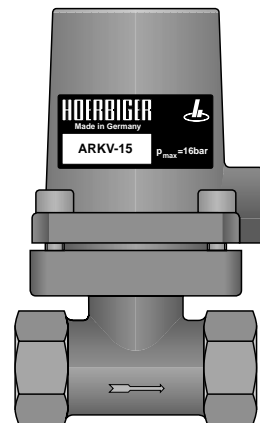


O =  $p_{st\min}$  for opening  
S =  $p_{st\max}$  for closing

**Actuating Pressure**  
Type: ARKV-20

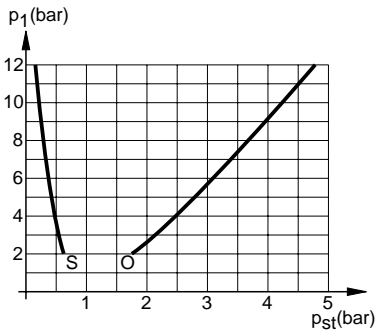


O =  $p_{st\min}$  for opening  
S =  $p_{st\max}$  for closing



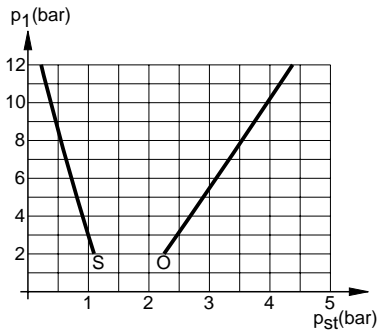
**HOERBIGER**  
**ORIGA**

**Actuating Pressure  
Type: ARKV-25**



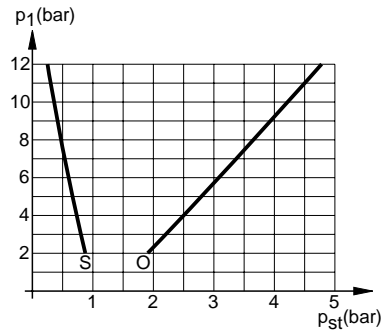
O =  $p_{stmin}$  for opening  
S =  $p_{stmax}$  for closing

**Actuating Pressure  
Type: ARKV-40**



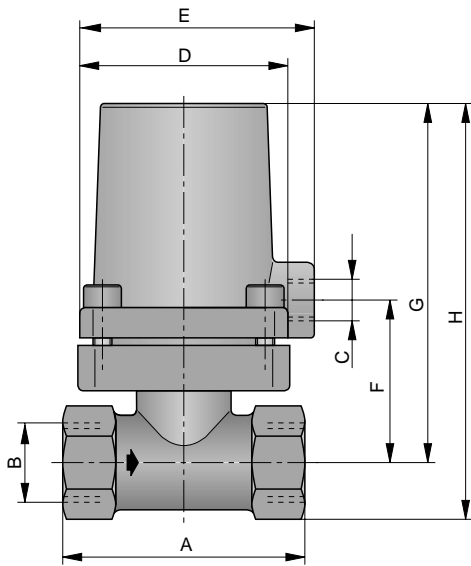
O =  $p_{stmin}$  for opening  
S =  $p_{stmax}$  for closing

**Actuating Pressure  
Type: ARKV-50**



O =  $p_{stmin}$  for opening  
S =  $p_{stmax}$  for closing

**Dimensions**



**Dimension Table (mm) and Order Instructions**

Order Instructions		A	B	C	D	E	F	G	H
Type	Order No.								
ARKV-15 NG	PD 07334	65	G1/2	G1/8	55	61	41.5	95	109.5
ARKV-20 NG	PD 07580	76	G3/4	G1/4	65	75	50	112	129
ARKV-25 NG	PD 07581	91	G1	G1/4	65	75	57	119	139
ARKV-40 NG	PD 07757	123	G1 1/2	G1/4	110	112	67	137	167.5
ARKV-50 NG	PD 07765	150	G2	G1/4	130	134	75	153	190